

# Partnerships Newsletter



## Action for Market Towns' National Convention 2013

On November 6<sup>th</sup> and 7<sup>th</sup> 2013, more than 150 business and civic leaders from across the UK attended [Action for Market Towns'](#) (AMT) Annual Convention for two days of practical discussion in the Congleton local area. The convention was organised by AMT, the five Town Partnerships and Cheshire East Council. Delegates exchanged ideas, learned how Government policy would affect them and picked up new ideas for projects and plans to boost their towns and high streets. A decisive factor in AMT taking their 2013 convention to Congleton was the working relationship between the Town Partnerships. Highlights of the conference included:



- A packed programme of superb plenary sessions which included a chance to question [Bill Grimsey](#) about his recent review, presenting an alternative future for Britain's high streets.
- Workshops and visits designed to support towns and high streets. These included study visits to Alsager, Middlewich and Sandbach to learn about the work of the five Town Partnerships.
- A question and answer session with Fiona Bruce MP on how the Government aims to help towns and high streets.
- A gala dinner at which the winners of the Towns Alive Awards 2013 were announced. Delegates were able to celebrate and hear from the winners.

For more information about the convention visit the [Action for Market Towns website](#)

## Developing a Joint Approach to Localism

The recent survey, to gain feedback from people currently involved with Local Area Partnerships (LAPs), received a good response rate of 167 people. The results are positive, providing some constructive ideas on future improvements for local area working. The main ways respondents felt LAPs had added value were by giving access to contacts and networks and enabling joined up working.

The main concerns raised in the survey were a lack of communication and promotion of the issues being addressed and projects being delivered. Some respondents wanted to see improvements in the balance between urban and rural issues and some suggested that LAPs needed to better evidence the impact being made by joint working.

There were two key characteristics of LAPs which respondents felt should be kept, these were the bringing together of partners, businesses and local organisations; and their clear focus on community involvement and engagement. The findings of this survey will be used to inform a joint approach to Localism and Creating Resilient Communities.

### Contents

- 1 AMT National Convention
- 2 Local Area News
- 6 Partner News
- 9 For your Notice Board
- 9 Conferences and Events
- 9 Consultations
- 10 Funding

### What is PACE?

Partnerships for Action in Cheshire East brings together all organisations who are working to maintain and improve the quality of life in Cheshire East.

## Local Area News

### Congleton

#### Middlewich High School – Learning for Life, Work, Leisure and Pleasure

Teachers at [Middlewich High School](#) believe that learning should be lifelong and are committed to providing a variety of educational and leisure-based courses for adults. In view of the current economic climate, and to complement their existing offer, they would like to provide an opportunity for people to learn for free, whilst at the same time providing an opportunity for skill sharing, personal development and social interaction.

They are looking for people who have a skill or knowledge to share and who are willing to volunteer for a minimum of five weeks for 1-2 hours per week to teach others. The school will provide a room, free of charge, for the sessions to take place to enable local people to access interesting activities at no cost to them, except where specific materials are required. They are aiming to start in January 2014.

For more information contact [Amanda Green](#) on 01606 288174

#### Sandbach Shop Front Improvement Scheme Begins

The Sandbach town team trial shop front improvement scheme has completed its first premises. [Acorn Home Services & Carpet Centre](#), on Congleton Road, was awarded a grant of £192.50, which was 50% of the costs to repaint the shop front.

The scheme is using £4,000 from a £10,000 Portas grant as funding, with an additional £2,000 recently secured from [Sandbach Town Council](#). Due to the additional funding the deadline has now been extended and, as the weather will soon be unsuitable for painting outside, work can be deferred until the spring. Successful proposals will be awarded a grant of no more than 50% of total costs, with a maximum grant of £500 per property.

For more information contact [Amanda Wagg](#) on 01270 600825

#### Congleton Wins North West in Bloom



The strength of partnerships and community involvement played a huge part in Congleton's success in winning [North West in Bloom](#) this year. Congleton will now represent the North West in the [Britain in Bloom](#) competition in 2014. The judges were impressed with the inclusion of community groups, volunteers and schools in the entry as well as the work of Cheshire East Streetscape and Parks teams. The Town Council is the driving force behind Congleton in Bloom.

For more information visit the [Congleton Town Council](#) website

#### Christmas Day Community Lunch

[Churches together in Sandbach](#) are providing a community lunch for those who would otherwise be on their own or unable to enjoy a meal on Christmas Day. The lunch includes a full traditional Christmas meal, together with entertainment. Transport can be provided within the Sandbach area.

If you know somebody, in Sandbach, who would benefit from a community lunch contact [Kim Stilwell](#) on 01270 762074 for more information

## Crewe

### RedShift Radio submits application for full time FM licence

Community radio station [RedShift Radio](#), based in Crewe, has now submitted its application to Ofcom for a full time FM licence for Crewe and Nantwich. The not-for-profit organisation that celebrated its third birthday in September has gone from strength to strength over the last three years. Currently with over seventy volunteers and three paid staff, RedShift is an organisation at the heart of the South Cheshire community. The programme schedule is diverse and includes shows for businesses, young people, charities, sports and music fans.



Local organisations are now being given the chance to become a pre-FM sponsor and join in supporting the growing RedShift community radio station to help them raise over £100,000 to secure their move to larger premises and their first year of broadcasting on FM.

For more information visit the [RedShift Radio website](#)

### Fifth Annual Senior Health and Wellbeing Fair Success



Crewe Senior Forum, working in partnership with Crewe LAP, successfully reached an audience of over 500 older people when they hosted the fifth annual Senior Health and Wellbeing Fair at the Oakley Centre, Crewe in October. 68 local and national public, private and community sector organisations attended the event. They all offered their time for free to advise, provide information, give complimentary therapies, offer exercise taster sessions, give informative presentations and provide health screening.

Rowland's Pharmacy performed 81 blood pressure checks and 43 BMI checks at the event and referred 6 people to their GP's. During the day over 100 holistic therapies were also given to those attending. The day was a massive success and over 100 people completed a health survey sharing their views and contributing to the ageing well debate.

For more information contact [Adrian Lindop](#)

### Royal Accolade for Crewe Estate's Community Food Project

A project based on the Sherborne Estate, Crewe has been given special recognition by the Royal Horticultural Society (RHS) as part of the [It's Your Neighbourhood campaign](#).

Sherborne Urban Produce sees the local community meeting once a week to take part in afternoon sessions and learn about growing and preparing their own fruit and vegetables, as well as what can be done to improve urban gardens for wildlife. The project is funded by the [Health Lottery's Active Communities Programme](#) which encourages communities to come together, get active and learn new skills for the future. Over sixty local residents of all ages and abilities have been actively involved since the initiative started in April this year and many are now growing their own plants and food at home.

Project participants were invited to the RHS Northwest in Bloom awards ceremony at Southport recently and were over the moon to receive an award in the 'developing' category.

James Thompson of Greenspaces South Cheshire CIC, who manages the project said: "We are delighted that the local community has been recognised for their efforts in this way. It's a great reward for all the hard work that the people of Sherborne have put in to improve their neighbourhood.

For more information visit The [Greenspaces CIC Facebook page](#)



## Volunteering can open up window of opportunities for students

Students found out more about the window of volunteering opportunities which are available, during Volunteering Opportunity Week. Representatives from different organisations visited the College's Dane Bank Avenue campus to offer information to students about local volunteering opportunities. The organisations included [Guide Dogs](#), [Caudwell Children](#), [Crewe Rotary Club](#), [Age UK](#), [Royal British Legion](#) and [Police Volunteers](#).



Dulcie Knifton, Head of Support, Advice and Guidance at South Cheshire College, said: "Volunteering is a great way to learn new skills, build confidence and gain valuable work experience. Volunteering can also help to improve a student's CV or university application personal statement. Whether students want to work with animals, children or community groups or help in the background with administration, publicity or fundraising then there is a role out there for them."

For more information contact Andrew Charlton on 01270 654654  
or visit the [South Cheshire College website](#)

## Three new initiatives from Smarter Ways to Travel



**smarter ways  
to travel**

The New Start bus ticket scheme helps people who live or work in Crewe to travel to new employment, training or apprenticeships, providing a period of free travel for people over 18 years who have been unemployed for a minimum of six weeks, or young people aged 16-18 years who have not been in education, employment or training for a minimum of six weeks.

For more information contact the [New Start co-ordinator](#) on 01270 371476 or visit the [New Start website](#)

Regulars on the one1ink bus service recently stepped in front of the camera to help promote the service to people who still struggle to make the simple journey into work. Before the bus route was introduced to link residential areas of Crewe with work places, one regular 'one1inker' had to catch three buses to get to work, while others travelled by taxi. To see what other 'one1inkers' said visit the [One1inkblog](#).

The Wheels2Work moped loan scheme helps people over 16 years who live, work or study in Crewe and can't easily access public or private transport. For a small monthly contribution based on income, the scheme provides the temporary loan of a modern, fuel-efficient moped, along with safety training, a helmet and safety clothing, insurance, servicing and maintenance.

For more information contact the Wheels2Work co-ordinator on 0800 435709  
or visit the [Wheels2Work website](#)

## Knutsford

### New Transport Sub Group

[The Knutsford LAP](#) has attracted a number of partners to form a new sub group designed to consider a range of issues relating to transport. The group will look at a number of ways in which gaps in transport provision could be addressed to both benefit those locally in Knutsford and those in the wider rural community. Partners attending the first meeting include parish councils, Manchester Airport, business representatives, Cheshire East Council, Registered Social Landlords and volunteer groups.

For more information and to get involved yourself contact [Richard Christopherson](#) on 01270 685881

## Macclesfield

### Can you support Macclesfield Job Club?

A new job club, which has been meeting at Macclesfield library on Wednesday afternoons, has been attracting around fourteen people each week. Attendees have the opportunity to speak to a careers advisor, use computers to access job search websites, type up CV's and to chat to others who are also searching for work locally.

As the job club grows, to provide an efficient service and to meet demand, the group require more laptops and mentors or volunteers to offer support. If you can help, by donating time or IT equipment, please get in touch using the contact details below.

For more information contact [Donna Peddie](#) on 01270 685806 or [Val Burlison](#) 01625 374950

## Nantwich

### The Wingate Special Children's Trust

For those of you who have heard about [The Wingate Special Children's Trust](#), you will know that they offer specialist holiday accommodation for children and young adults with physical and learning disabilities. However, many people are not aware that they have a whole host of other facilities which are available for hire.



The Rieber Hall is an ideal meeting room which will hold up to sixty people theatre-style with a screen, projector, DVD player and its own separate kitchen facilities. They also have a fully fitted gymnasium with sprung floor and three trampolines which is used not only for gymnastics, but for cheerleading troupes, pilates classes and groups or individuals with disabilities.

For more information about the facilities contact [Catherine Moore](#) on 01270 780456

## Poynton

### Disley Cycling Festival



The inaugural Disley Cycling Festival was held on a rather wet Saturday in October. Disley Parish Council, working in partnership with Cheshire East Council's Leisure Development team, organised a family fun day based around all things bike and building on the inspirational legacy of Disley's Paralympic heroes [Dame Sarah and Barney Storey](#). PCSOs Chris Jackson and Chris Luke were kept busy with free cycle security marking, Disley Primary School children took part in an artwork competition and local business [Freeride Cycles](#) offered a free cycle maintenance workshop.

Over ninety people, many of them children, braved the Disley drizzle to ride the five mile circular route into [Lyme Park](#) which was led by [Hannah Walker](#), Disley's rising star in the cycling world. Their reward was to be presented with gold medals by Dame Sarah and Barney Storey. The culmination of the event was the unveiling and dedication of a sculpture created by local artists Lynn and Simon Mahoney.

In view of the success of the event the Parish Council has decided to make this an annual fixture on the Disley calendar, albeit a little earlier next year!

## Partner News

### Local charity delivers a Winning Awards Event for Proud Cheshire Communities

The 57<sup>th</sup> Community Pride Competition organised by [Cheshire Community Action](#) was celebrated in the presence of a large gathering of civic leaders including the High Sheriff of Cheshire, parish councillors, competition judges and enthusiasts who had travelled from all parts of the county.

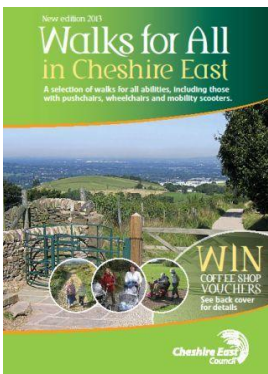


The overall championship award was presented to [Audlem](#) as best kept village/market town. Audlem is a worthy winner with a very strong community. There are many local volunteers who all work hard to make Audlem a vibrant place to live and visit. The best village website was won by [Congleton](#) for the market town award and Audlem for the village award. [Great Warford](#) received the award for the most improved village in the past year and [Plumley with Toft & Bexton](#) won the community safety award, which is sponsored by Cheshire Constabulary.

The competition exemplifies the community spirit in all the villages. It demonstrates and emphasises just how much voluntary work is undertaken to keep Cheshire a vibrant and attractive county. The competition encourages villages to improve every aspect of village life which is under threat in so many different ways. The volunteer judges come from all over the county and spend considerable time scoring the entrants throughout the year. They all agreed that standards continue to improve.

For the full list of winners visit the [Cheshire Community Action website](#)

### Walks for All and Coffee for Lucky Winners



The picturesque Cheshire East countryside is now even easier to access thanks to a new walking guide aimed at people of all abilities. Walks for All details ten routes which are suitable for those with children, pushchairs, wheelchairs and those with limited mobility. The walks include the lakeside path around Astbury Mere in Congleton, the riverside area of Nantwich and the rugged hill country of Tegg's Nose near Macclesfield. Details of path surfaces and gradients, gates and gaps, public transport, parking, toilets and refreshment facilities are listed for each walk.

The booklet, originally developed in partnership with local groups and individuals who advised on the content and the layout, has been revised this summer with improved and up to date information. To celebrate its publication, Miola Coffee Shop in Sandbach has offered vouchers for some lucky readers who give feedback on the leaflet.

Copies of the leaflet are available from Customer Service Centres, libraries, by phoning 01270 686029 or by downloading from the rangers pages of [Cheshire East Council's website](#)

### Free Trees for Schools and Community Groups

Not for profit groups that wish to improve their local community have the opportunity to apply for one of 3,000 free tree packs, provided by the Woodland Trust, which are worth either £30, £105 or £420. All applicants need to do is find a suitable site and supply the volunteer planters and tree protection. The closing date for applications is 9<sup>th</sup> January 2014.



For more information and to apply for a free tree pack visit the [Woodland Trust website](#)



## Representing the Voice of Tourism in Cheshire East

A new tourism group representing [Cheshire's Peak District](#) has been developed to represent the voice of tourism businesses within that area. Cheshire's Peak District encompasses one hundred square miles of Cheshire's peaks and plains, including part of the Peak District National Park, from the moorlands of Biddulph in the South to Lyme Park and Disley in the North along with nearby areas such as Alderley Edge and Knutsford in the West.

The group will meet three to four times a year to discuss challenges, opportunities and future direction as well as having an opportunity to network with key contacts in the visitor economy arena. The group will be one of three tourism groups representing Cheshire East; giving a voice to the area and inputting directly into visitor economy planning locally and regionally.

For more information on joining any of the tourism groups contact [Richard Milkins](#) on 01625 378060

## Cheshire Furniture Reuse Forum – Projects in the heart of your community

Cheshire Furniture Reuse Forum (CFRF) is made up of local projects throughout Cheshire that collect quality reusable furniture and appliances, donating or selling them at low cost to people in need. The projects employ staff, create work placements and train volunteers whilst stopping good quality furniture going to landfill. Volunteering and training opportunities exist in warehousing, retail, furniture restoration, new media, bike and appliance maintenance.



The Forum is supported by Cheshire East and Cheshire West and Chester Councils and the projects work in partnership with local housing associations, training agencies and support organisations. All projects collect reusable furniture and appliances, some collect broken appliances and fix in their accredited workshops and some collect bikes. Over the last five years the forum reused over 3,000 tonnes of items which helped to furnish over 60,000 households.

To find out more about your local project, donating items, volunteering or partnership working contact [Naomi Graham](#) or visit the [Cheshire Furniture Reuse Forum](#)

## Love Food, Hate Waste at Manchester Metropolitan University



A recipe for success was the order of the day for students that visited the Love Food Hate Waste event at Manchester Metropolitan University in October, arranged by Cheshire East Waste Awareness and the Manchester Metropolitan University (MMU) Environment Team. The Crewe Campus hosted a 'cook your own snack' event which saw lots of students whisking up omelettes and chopping up for stir fries, showing just how quick and easy a tasty snack from leftovers in the fridge can be. A student's purse is very stretched at the best of times, so to learn new cooking skills and save money under the

guidance of Healthbox food nutritionists was something they could not resist finding out about.

New figures show that UK households throw away 7 million tonnes of food and drink every year. In simple terms, an average UK family throws away 24 meals a month that should have been eaten.

For money saving tips, advice and lots of recipes for leftovers visit the [Love Food Hate Waste](#) website

## The Learning Disability Life Course Project

Cheshire East Council and its partners are committed to improving the outcomes for those residents, young and old, who have a learning disability in Cheshire East. Working with key partners from health education and social care, service users, parents and carers they are carrying out a major project and whole system review of learning disability support across the life course of an individual. The aim of the project is to improve the overall experience of service users, their parents and carers, through securing new and improved integrated pathways of care.

The project is driven by the growth in demand, complexity of need and the drive for efficiency and effectiveness across the range of specialist and non-specialist services provided to support those who have a learning disability. To achieve the project three workstreams have been developed: Implementing the requirements of the Children and Families Bill, Undertaking a commissioning review across the life course of an individual and Putting in place integrated teams.

For more information contact [Diane Taylor](#) on 07717 426802

## World Rural Women's Day Celebrations

October 15<sup>th</sup> every year is World Rural Women's Day, which was first introduced by the United Nations in 1997. Its aim is to celebrate and recognise women working and living in rural areas across the globe and for some highlighting the struggles that rural women face. Cheshire and Warrington have been celebrating their rural women since 2002. A committed team of women from the Cheshire Association of Local Councils (ChALC), Cheshire East Council, the Women's Institute, Cheshire West and Chester Council, Reasheath College and Cheshire Community Action organise a celebratory evening where the work of local rural women is recognised.



This year nearly one hundred people attended the evening at the Fire and Rescue HQ, where they heard of the work and achievements of a number of women living and working in rural areas. Amongst the winners were Hazel Sutcliffe who was fundamental in setting up the Holmes Chapel Parish Plan steering group and Suzanne Johns from Middlewich, who has been central to supporting the young people of the town and being involved in the establishment of the Wych community centre over ten years ago. The presentations were followed by a sausage supper and the evening ended with a performance from the popular women's choir The Handbag of Harmonies.

For more information contact [Hazel Merrill](#) on 01948 871314

## Cheshire East Co-ordinated Advice Partnership



A partnership consisting of independent advice providers in the area, which includes [Citizens Advice Bureau](#) (CAB) North and South, [Just Drop In](#), [Disability Information Bureau](#), [CHAWREC](#), [Visyon](#) and [Age UK Cheshire East](#) successfully applied to the Advice Services Transition Fund for money to transform the way that advice services are delivered in Cheshire East.

Jacque Grinham, Chief Officer of Cheshire East CAB North speaking on behalf of the partners involved in the bid said: "We are very excited to have been able to attract over a quarter of a million pounds investment into Cheshire East. The money will fund work that will enable us to introduce a new system for the public to use, resolving issues without people having to come into an office. It will create new volunteering opportunities and enable us to review the way that we are working to ensure that our staff are able to work as efficiently and effectively as possible."

For more information visit the [Cheshire East Co-ordinated Advice Partnership website](#)



## Community Resilience – Joint Cheshire Emergency Planning Team

Parish and town councillors were invited to attend Community Resilience Speed Training Events which took place in October. Delegates were provided with information about how to prepare a community emergency plan and received advice on how to make their communities more resilient to major emergencies. Delegates were placed into groups and visited each of the presenters to learn how they respond to incidents and cover current issues faced in our communities. These included [Cheshire Constabulary](#), [Cheshire Fire & Rescue Service](#), [North West Ambulance Service](#), [Snow Angels / Winter Planning](#) and the [Environment Agency](#).

For more information contact [Ruth Stevens](#) on 01244 973789

## Connecting Cheshire maps out fibre broadband expansion plans



Connecting Cheshire has revealed a fibre broadband rollout map just seven months after the signing of a £28.5m contract with BT to bring fibre broadband to 96 per cent of Cheshire. The map shows where communities throughout Cheshire East can expect the high-speed technology to arrive by the end of summer 2015.

For more information, and to view the map, visit the [Connecting Cheshire website](#)

## For your Notice Board

This section allows you to download posters which you may wish to display on your notice boards, either for staff, customers or residents. Please email January / February notices to [Tina Jones](#).

- ▶ [Highways Winter Leaflet](#)
- ▶ [Dry January Booklet](#)
- ▶ [Barnby Choir Poster](#)
- ▶ [Nominated Neighbour Cards](#)
- ▶ [Traffic Free Cycle Route Posters](#)
- ▶ [Holmes Chapel Music Society Posters](#)

## Conferences and Events

### Christmas Events and Activities

There are a whole host of events and activities taking place across Cheshire East over the Christmas period. If you are looking to attend an event, or would like to promote your event or activity, why not visit the [Cheshire East Council What's On Guide](#), [Stuff2Do in Cheshire East](#) and [Marketing Cheshire Websites](#).



With activities such as the [Christmas Fun Day at Nantwich Museum](#), [Christmas concerts at Tatton Park](#) and a variety of [Christmas markets across Cheshire East](#) there is something for everyone this year.

## Consultations

### The future of Cheshire East drug and alcohol services... have your say

An online survey about the future of drug and alcohol services in the borough is gathering views from the public and those who are currently using services or have done so in the past.

Services for alcohol and drug misuse are currently separate and Cheshire East Council is thinking about bringing these into one service, along with the separate services for young people and adults. The Council is also considering the need to have one or more organisations who take a lead role in ensuring that the services work well together. If you work with clients affected by substance misuse, what do you think about these changes? The consultation closes on 6<sup>th</sup> December 2013.

For more information and to complete the survey visit the [Cheshire East Council website](#)

## Local Plan Core Strategy Consultation

Following on from previous Local Plan public consultations, the comments received have all been considered and evaluated. The information contained within the comprehensive evidence base, that has been gathered to support the development of the Plan, has been considered and the Council has produced the Pre-Submission Core Strategy document. This document sets out where future housing, employment and other development will take place and provides a clear indication of the vision that Cheshire East Council has for the borough, in terms of how it will grow and develop, to the year 2030 and beyond.

The Pre-Submission Core Strategy document is now undergoing a six week period of consultation, from 5<sup>th</sup> November to 16<sup>th</sup> December 2013.



For more information and to respond to the consultation visit the [Cheshire East Council website](#)

## Funding

### Cheshire East Council Community Grants Scheme

The next deadline for community grant applications is 27<sup>th</sup> December 2013. This is the final round for 2013/14. Seventy-four applications have been awarded across the three rounds so far and the scheme has contributed to over £800,000 worth of projects. Please bear in mind the Christmas period when submitting your application to this final round. If you require assistance with your application please submit before 20<sup>th</sup> December 2013.

For further information visit the [Cheshire East Council website](#)

### STOP PRESS STOP PRESS STOP PRESS STOP PRESS STOP PRESS

Two schemes are available to support community led transport initiatives. These are a Transport & Accessibility Grant Scheme and Vehicle Allocation Scheme. More information can be found on the [Cheshire East Council Website](#) but hurry, the deadline is approaching fast – Mid day on Wednesday 11<sup>th</sup> December 2013.

## Editors Message



In this final newsletter of the year I would like to thank everybody who has contributed to the newsletter throughout 2013. I have read many fantastic stories of work being completed in partnership across Cheshire East and would like to wish everybody a very merry Christmas as we look forward to 2014.

**The next edition of the Partnerships Newsletter will be circulated at the end of January, the deadline for submission of articles is 13<sup>th</sup> January 2014.**

**To promote an event, conference or consultation, ask for help with a project or share information which is of interest to our wide range of partners contact [Tina Jones](#).**

**Previous copies of the newsletter are available on the [PACE website](#).**

Contact: PACE  
Telephone: 01270 685811 [www.pacecheshireeast.org.uk](http://www.pacecheshireeast.org.uk)  
2nd Floor, Westfields, Middlewich Road, Sandbach CW11 1HZ